



The ZSV spring loaded fan coil valve is a high quality piston valve and when coupled with the electrothermal actuator ZTA provides very reliable on-off control action. The valves are available in either normally open or normally closed models and they come with matching actuators.

- Low cost
- Tight shut-off
- Valve & actuator can be installed separately
- High force actuator
- Spring loaded NC or NO valve
- Simple actuator latch on installation

Function

The ZSV series two position valves are designed to control heating or cooling water. Valves are designed to withstand high moisture conditions found in many concealed installation.

Function

The valve is operated by a thermal actuator. The ZSVC valve is normally closed by spring action within the valve and required a pushdown-to-open action from the actuator to operate.

The ZSVO valve is normally opened by spring action within the valve without the actuator. When actuator is mounted, it pushes the stem downwards to closed the valve. When power is applied, the actuator will retract upward and the valve will open by its internal spring. When power is off, the actuator will slowly push the stem down to close the valve.

Actuator

The actuators are in plastic casing, standard voltage is 220 VAC. Other voltages on request. The actuators are detachable and can be ordered separately.

Installation

The valves are to be mounted according to the flow direction marks on the valves.
To ensure tight closure and prevent noise when closing, the valves are to be mounted on the return line of a coil.
The 3-way valve is of mixing type.
The valves are recommended to be mounted with the actuator in an upright or side position.

Model Selection

2-way NC	3-way NC	Connection	Kv	+Pc	Actuator
ZSVC215	ZSVC315	DN15	Kv1.6	250kPa	ZTAD
ZSVC220	ZSVC320	DN20	Kv2.8	150kPa	ZTAD
2-way NO	3-way NO	Connection	Kv	+Pc	Actuator
ZSVO215	ZSVO315	DN15	Kv1.6	250kPa	ZTAU
ZSVO220	ZSVO320	DN20	Kv2.8	150kPa	ZTAU

Technical Data

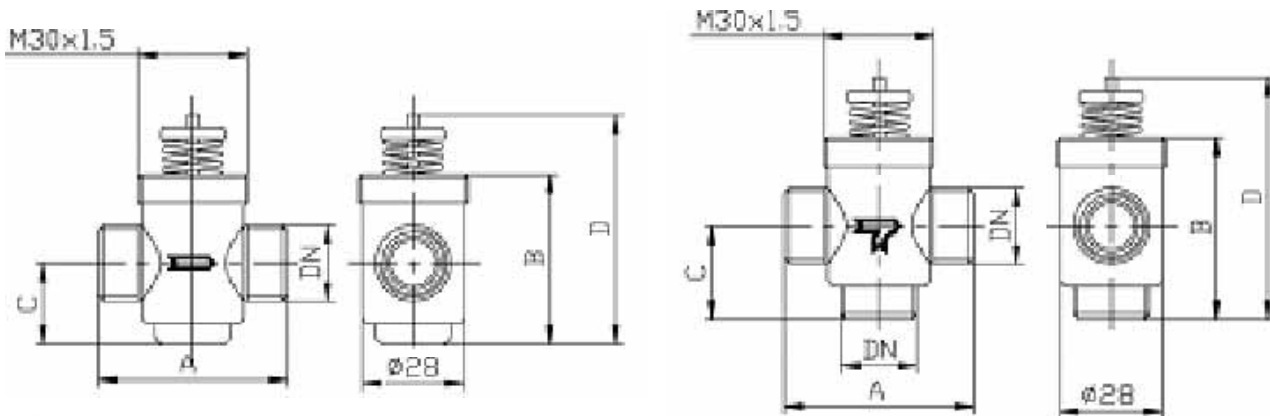
VALVES

Valve type	2/3 way piston valve
Pressure class	PN 16 (250 psi)
Fluid temperature	5 to 95°C
Ambient operating temperature	0 to 60°C
Stem stroke	4.5 mm
Leakage	none
Valve body	Forging brass HPb59-1
Stem & spring	stainless steel
Piston	FRPA-66
Valve packing	Nitrite rubber

ACTUATORS

Supply voltage	24V, 110V, 220/230V AC
Power consumption	1.1 VA
Ambient operating temperature	-0.5 to 40 °C
Control Element	Electrothermal wax sensor
Force	80N <= F < 130N
Full stroke	4.5 mm
Connector	M30 x 1.5
Positioning time	5 - 6.5 minutes
Protection class	IP40
Weight	94 g
Chassis & cover	PA6110

Dimensions



Dimension Model	Dimension				
	DN	A	B	C	D
ZSV...215	15	52	47	19.5	63
ZSV...315	15	52	50	25	66
ZSV...220	20	56	47	22	63
ZSV...320	20	56	59	37	78

Assembly & Disassembly

